



HIGH END STAINLESS STEEL OUTDOOR CUSTOMIZATION



/Model: GM01 /



PRODUCT
DETAIL DIAGRAM

PRODUCT INTRODUCTION AREA

- Model: GM01
- Product size 3000mm
- Material Stainless steel original color
- Oven performance: excellent
- Gas type: natural gas
- Standard accessories: 4-head stove, movable casters, stainless steel basin, faucet, drain pipe
- Customizable sizes and styles



/Model: GMO2 /



PRODUCT INTRODUCTION AREA

- Model: GM02
- Product size 3370mm
- Material Armani Grey
- Oven performance: excellent
- Gas type: natural gas
- Standard accessories 6+1 stove, movable casters, stainless steel basin, faucet, drain
- Customizable sizes and styles



/Model: GM03 /

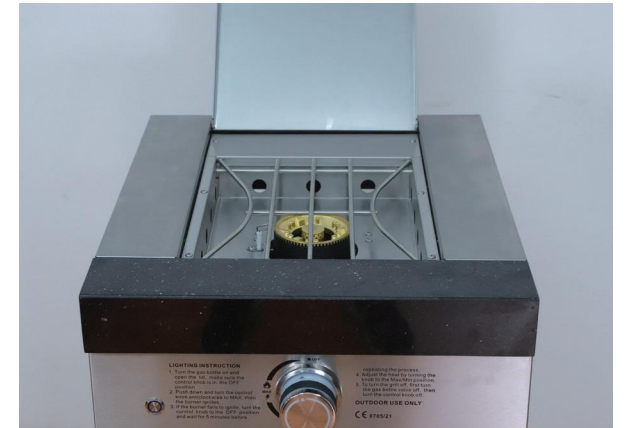
PRODUCT INTRODUCTION AREA

- Model: GM03
- Product size 3170mm
- Material Grey rock
- Oven performance: excellent
- Gas type: natural gas
- Standard accessories: 6+1 stove, single door refrigerator, garbage bin, stainless steel basin, faucet, drain
- Customizable sizes and styles





/Model: GM04 /



PRODUCT INTRODUCTION AREA

- Model: GM04
- Product size 3200mm
- Material: Technology wood gray brown
- Oven performance: excellent
- Gas type: natural gas
- Standard accessories: 4-head stove, side stove, movable casters, stainless steel basin, faucet, drain
- Customizable sizes and styles



/Model: GM05 /



PRODUCT INTRODUCTION AREA

- Model: GM05
- Product size 3225mm
- Material Black sand surface
- Oven performance: excellent
- Gas type: natural gas
- Standard accessories 6-head stove, side stove, movable casters, stainless steel basin, faucet, drain
- Customizable sizes and styles



/Model: GM06 /

PRODUCT INTRODUCTION AREA

- Model: GM06
- Product size: 4219mm
- Material: Wood grain
- Oven performance: excellent
- Gas type: natural gas
- Standard accessories: 6+1 head stove, egg stove, double door refrigerator, movable wheels, stainless steel basin, faucet, drain
- Customizable sizes and styles





/Model: GM07 /



PRODUCT INTRODUCTION AREA

- Model: GM07
- Product size 4200mm
- Material Camphor wood
- Oven performance: excellent
- Gas type: natural gas
- Standard accessories 4+1 head stove, side stove, movable casters, stainless steel basin, faucet, drainage pipe
- Customizable sizes and styles



Model: GM08 /



PRODUCT INTRODUCTION AREA

- Model: GM08
- Product size 3070mm
- Material Stainless steel brushed primary color
- Oven performance: excellent
- Gas type: natural gas
- Standard accessories 6+1+1 head stove, movable casters, stainless steel basin, faucet, drain
- Customizable sizes and styles



/Model: GM09 /

PRODUCT INTRODUCTION AREA

- Model: GM09
- Product size 3150mm
- Material Stainless steel brushed primary color
- Oven performance: excellent
- Gas type: natural gas
- Standard accessories: 6+1+1 head stove, double door refrigerator, movable wheels, stainless steel basin, faucet, drain
- Customizable sizes and styles





/Model: GM10 /



PRODUCT INTRODUCTION AREA

- Model: GM10
- Product size 2700mm
- Material Stainless steel brushed primary color
- Oven performance: excellent
- Gas type: natural gas
- Standard accessories 6+1+1 head stove, movable casters, stainless steel basin, faucet, drain
- Customizable sizes and styles

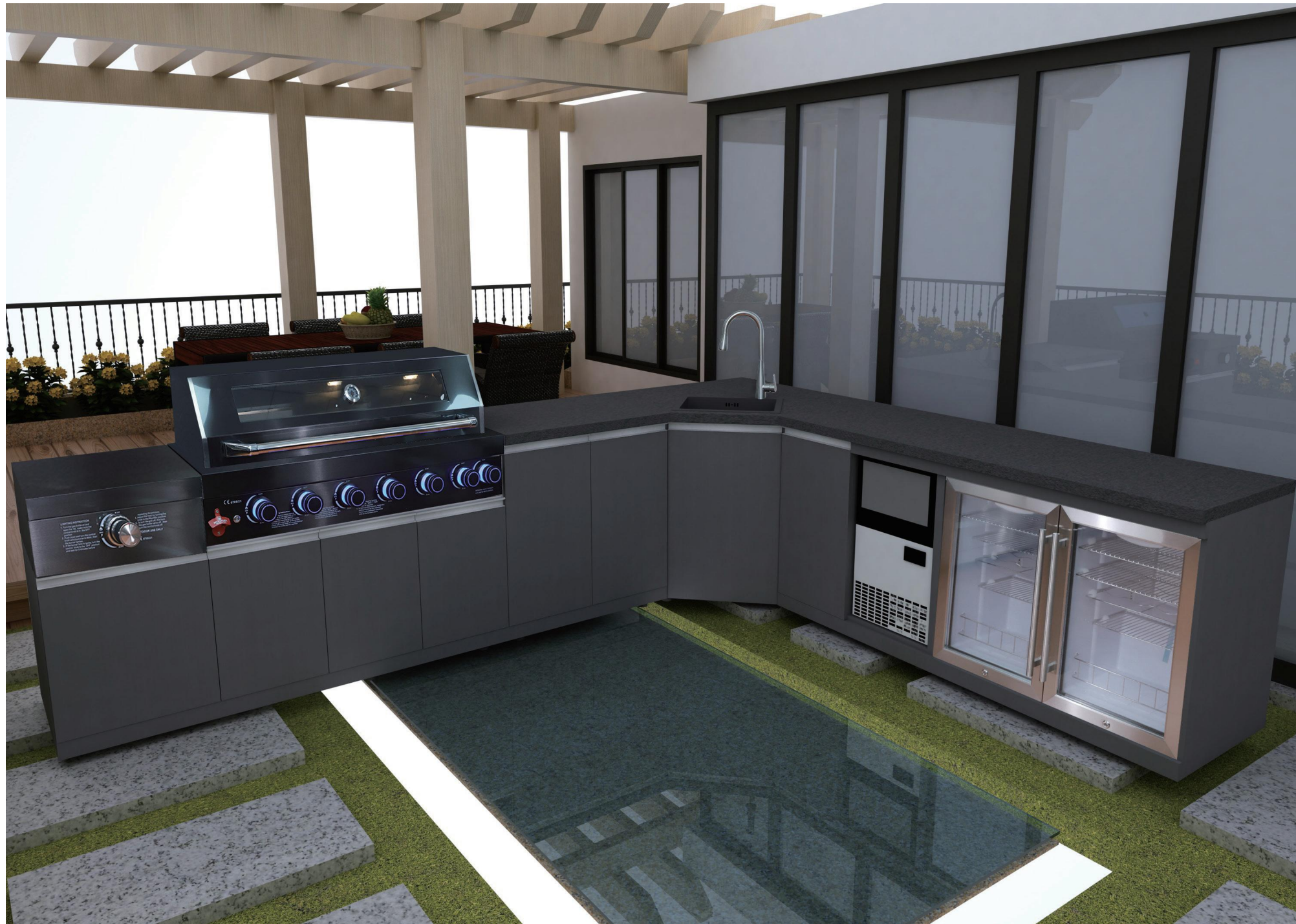


/Model: GM11 /



PRODUCT INTRODUCTION AREA

- Model: GM11
- Product size 3470mm
- Material: electroplated black titanium
- Oven performance: excellent
- Gas type: natural gas
- Standard accessories: 6+1+1 head stove, egg stove, single door refrigerator, movable wheels, stainless steel basin, faucet, drain
- Customizable sizes and styles



/Model: GM12 /

PRODUCT INTRODUCTION AREA

- Model: GM12
- Product size 3325 * 2710mm
- Material Black fingerprint free brushed wire
- Oven performance: excellent
- Gas type: natural gas
- Standard accessories 6-head stove, double door refrigerator, stainless steel basin, faucet, drain
- Customizable sizes and styles





Model: GM13 /

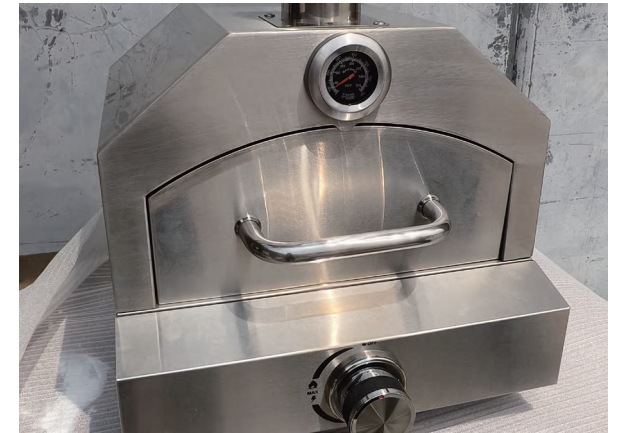


PRODUCT INTRODUCTION AREA

- Model: GM13
- Product size 3225mm
- Material Black fingerprint free brushed wire
- Oven performance: excellent
- Gas type: natural gas
- Standard accessories 6-head stove, single door refrigerator, stainless steel basin, faucet, drain
- Customizable sizes and styles



/Model: GM14 /



PRODUCT INTRODUCTION AREA

- Model: GM14
- Product size 3000*2500mm
- Material Fingerprint free brushed black
- Oven performance: excellent
- Gas type: natural gas
- Standard accessories: 6-head oven, pizza oven, double door, three drawer cabinet, sink
- Customizable sizes and styles



/Model: GM15 /

PRODUCT INTRODUCTION AREA

- Model: GM15
- Product size 4019mm
- Material Black and White Root
- Oven performance: excellent
- Gas type: natural gas
- Standard accessories 6-head stove, invisible refrigerator, stainless steel basin, faucet, drain
- Customizable sizes and styles





Model: GM16 /

PRODUCT INTRODUCTION AREA

- Model: GM16
- Product size 3563 * 2473mm
- Material Cui Li light gray
- Oven performance: excellent
- Gas type: natural gas
- Standard accessories 6-head stove, double door refrigerator, stainless steel basin, faucet, drain
- Customizable sizes and styles





/Model: GM17 /



PRODUCT INTRODUCTION AREA

- Model: GM17
- Product size 3300mm
- Material Hanjiang Snow
- Oven performance: excellent
- Gas type: natural gas
- Standard accessories: 4+1+1 head stove, single door refrigerator, pizza stove, stainless steel basin, faucet, drain
- Customizable sizes and styles



Model: GM18 /

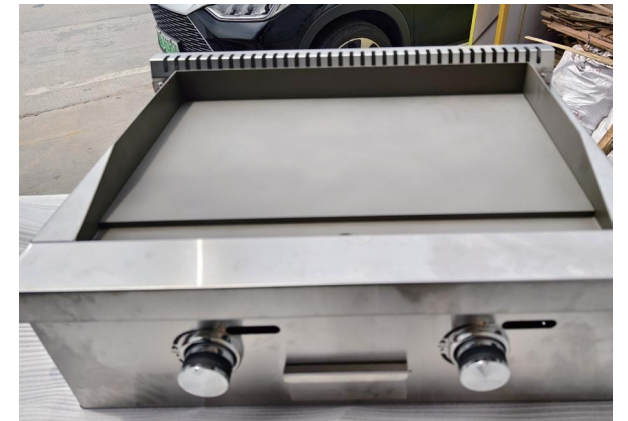


PRODUCT INTRODUCTION AREA

- Model: GM18
- Product size: 3563 * 2473mm
- Material: Italian black walnut
- Oven performance: excellent
- Gas type: natural gas
- Standard accessories: 6-head stove, floor standing refrigerator, stainless steel basin, faucet, drain
- Customizable sizes and styles



/Model: GM19 /



PRODUCT INTRODUCTION AREA

- Model: GM19
- Product size 3737mm
- Material: Wood grain color
- Oven performance: excellent
- Gas type: natural gas
- Standard accessories: 6+1 Head Stove, Iron Plate Stove, Side Stove, Egg Stove
- Customizable sizes and styles



Okeiwi patented products

Model: GM20 /

PRODUCT INTRODUCTION AREA

Okeiwi patented products

- Model: GM20
- Product size 2325x2300x770mm
- Material 304 stainless steel
- Oven performance: excellent
- Gas type: natural gas
- Standard accessories: 4-head stove, low-power range hood, trash can
- Customizable sizes and styles





800*860*580mm



4+1 barbecue grill 815 * 650 * 580mm



6-head barbecue grill size 1105 * 650 * 580mm



6+1+1 Barbecue Stove 1470 * 650 * 580mm



Side furnace 490 * 650 * 580mm



Double door refrigerator cabinet 950 * 860 * 580mm



1000*860*580mm



Iron plate furnace 760 * 645 * 580mm



800*860*580mm



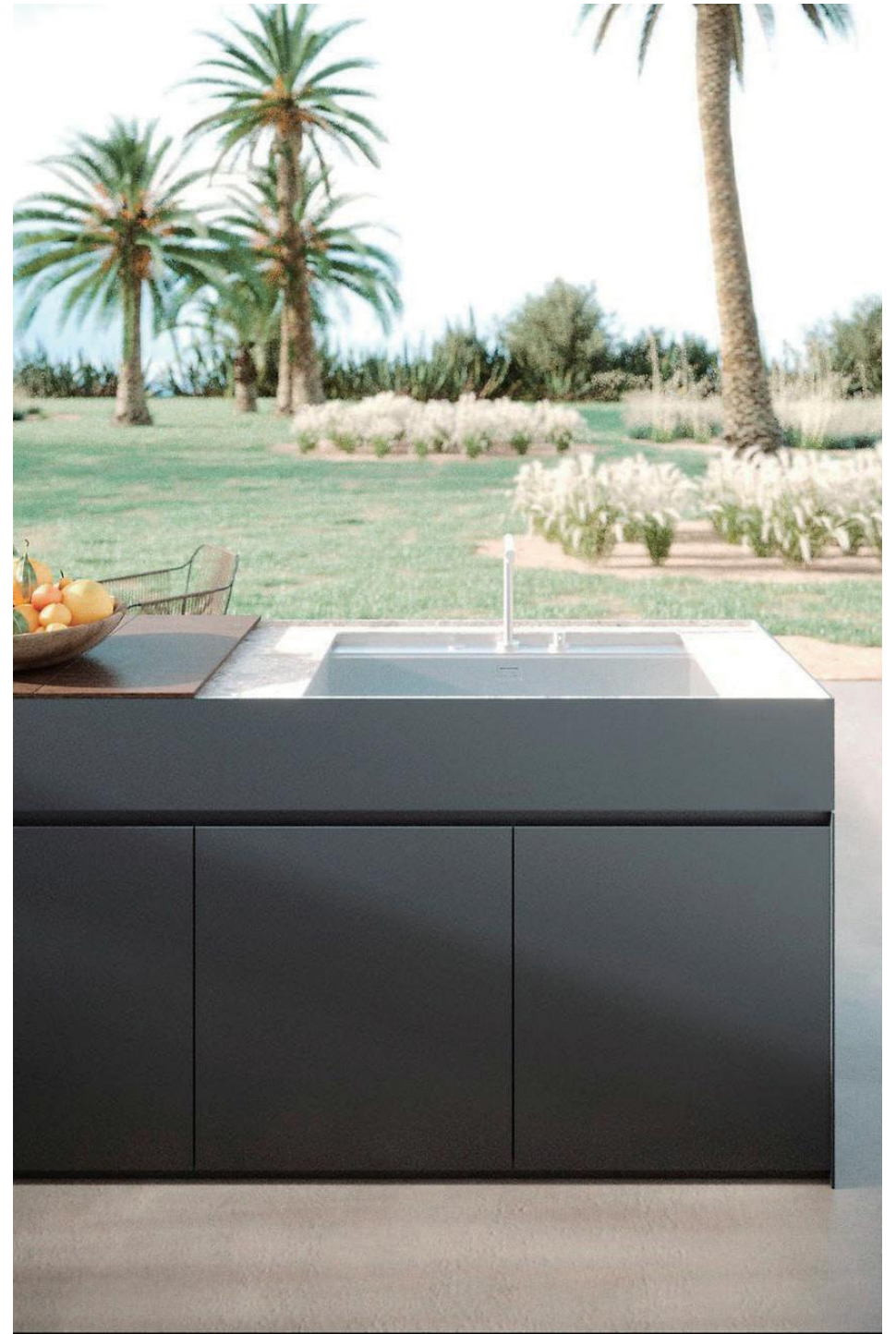
Single door refrigerator cabinet 860 * 860 * 580mm



Brick and stone cabinet 930 * 930 * 860mm



600*860*580mm









INFORMATION

Model: 4B01-A
Product Size: 1468*576*540mm
Cooking Area: 723*460mm
Material: SUS 304
Performance: 70000BTU/20.5KW
Feature: Easy to assemble and clean
Application: Garden/Party/Outdoor
CUSTOMIZABLE SIZE AND APPEARANCE



INFORMATION

Model: 4B02-A
Product Size: 1468*600*1240mm
Cooking Area: 723*460mm
Material: SUS 304
Performance: 70000BTU/20.5KW
Feature: Easy to assemble and clean
Application: Garden/Party/Outdoor
CUSTOMIZABLE SIZE AND APPEARANCE



INFORMATION

Model: 4B02-B
Product Size: 1468*600*1240mm
Cooking Area: 723*460mm
Material: SUS 304
Performance: 70000BTU/20.5KW
Feature: Easy to assemble and clean
Application: Garden/Party/Outdoor
CUSTOMIZABLE SIZE AND APPEARANCE



INFORMATION

Model: 6B01-B
Product Size: 1100*576*540mm
Cooking Area: 960*460mm
Material: SUS 304
Performance: 3.55KW*4/90000BTU
Feature: Easy to assemble and clean
Application: Garden/Party/Outdoor
CUSTOMIZABLE SIZE AND APPEARANCE



INFORMATION

Model: 6B01-A
Product Size: 1100*576*540mm
Cooking Area: 960*460mm
Material: SUS 304
Performance: 3.55KW*4/90000BTU
Feature: Easy to assemble and clean
Application: Garden/Party/Outdoor
CUSTOMIZABLE SIZE AND APPEARANCE



INFORMATION

Model: 6B02-A
Product Size: 1468*600*540mm
Cooking Area: 960*460mm
Material: SUS 304
Performance: 3.55KW*4/90000BTU
Feature: Easy to assemble and clean
Application: Garden/Party/Outdoor
CUSTOMIZABLE SIZE AND APPEARANCE



INFORMATION

Model: 1B01
Product Size: 410*530*211mm
Cooking Area: 723*460mm
Material: SUS 304
Feature: Easy to assemble and clean
Application: Garden/Party/Outdoor
CUSTOMIZABLE SIZE AND APPEARANCE



INFORMATION

Model: 1B02
Product Size: 572.6*400*260mm
Cooking Area: 723*460mm
Material: SUS 304
Feature: Easy to assemble and clean
Application: Garden/Party/Outdoor
CUSTOMIZABLE SIZE AND APPEARANCE



INFORMATION

Model: 1B03
Product Size: 680*410*260mm
Cooking Area: 723*460mm
Material: SUS 304
Feature: Easy to assemble and clean
Application: Garden/Party/Outdoor
CUSTOMIZABLE SIZE AND APPEARANCE



INFORMATION

Model: 1B04
Product Size: 490*580*540mm
Cooking Area: 723*460mm
Material: SUS 304
Feature: Easy to assemble and clean
Application: Garden/Party/Outdoor
CUSTOMIZABLE SIZE AND APPEARANCE



INFORMATION

Model: 1B05
Product Size: 490*580*540mm
Cooking Area: 723*460mm
Material: SUS 304
Feature: Easy to assemble and clean
Application: Garden/Party/Outdoor
CUSTOMIZABLE SIZE AND APPEARANCE



INFORMATION

Model: 1B06
Product Size: 490*580*540mm
Cooking Area: 723*460mm
Material: SUS 304
Feature: Easy to assemble and clean
Application: Garden/Party/Outdoor
CUSTOMIZABLE SIZE AND APPEARANCE

Stainless steel baking varnish color plate.

HY-KQ01	HY-KQ02	HY-KQ03	HY-KQ04	HY-KQ05	HY-KQ06	HY-KQ07	HY-KQ08	HY-KQ09	HY-KQ10
HY-KQ11	HY-KQ12	HY-KQ13	HY-KQ14	HY-KQ15	HY-KQ16	HY-KQ17	HY-KQ18	HY-KQ19	HY-KQ20
HY-KQ21	HY-KQ22	HY-KQ23	HY-KQ24	HY-KQ25	HY-KQ26	HY-KQ27	HY-KQ28	HY-KQ29	HY-KQ30
HY-KQ31	HY-KQ32	HY-KQ33	HY-KQ34	HY-KQ35	HY-KQ36	HY-KQ37	HY-KQ38	HY-KQ39	HY-KQ40
HY-KQ41	HY-KQ42	HY-KQ43	HY-KQ44	HY-KQ45	HY-KQ46	HY-KQ47	HY-KQ48	HY-KQ49	HY-KQ50
HY-KQ51	HY-KQ52	HY-KQ53	HY-KQ54	HY-KQ55	HY-KQ56	HY-KQ57	HY-KQ58	HY-KQ59	HY-KQ60
HY-KQ61	HY-KQ62	HY-KQ63	HY-KQ64	HY-KQ65	HY-KQ66	HY-KQ67	HY-KQ68	HY-KQ69	HY-KQ70
HY-KQ71	HY-KQ72	HY-FM01	HY-FM02	HY-FM03	HY-FM04	HY-FM05	HY-FM06	HY-FM07	HY-FM08
HY-FM09	HY-FM10	HY-FM11	HY-FM12	HY-FM13	HY-FM14	HY-FM15	HY-FM16	HY-FM17	HY-FM18
HY-FM19	HY-FM20	HY-FM21	HY-FM22	HY-FM23	HY-FM24	HY-FM25	HY-FM26	HY-FM27	HY-FM28
HY-FM29	HY-FM30	HY-FM31	HY-FM32	HY-FM33	HY-FM34	HY-FM35	HY-FM36	HY-FM37	HY-FM38

HY-FM39	HY-FM40	HY-FM41	HY-FM42	HY-FM43	HY-FM44	HY-FM45	HY-FM46	HY-FM47	HY-FM48
HY-FM49	HY-FM50	HY-FM51	HY-FM52	HY-FM53	HY-FM54	HY-FM55	HY-FM56	HY-FM57	HY-FM58
HY-FM59	HY-FM60	HY-FM61	HY-FM62	HY-FM63	HY-FM64	HY-FM65	HY-FM66	HY-KLF01	HY-KLF02
HY-KLF03	HY-KLF04	HY-KLF05	HY-KLF06	HY-KLF07	HY-KLF08	HY-KLF09	HY-KLF10	HY-KLF11	HY-KLF12
HY-KLF13	HY-KLF14	HY-KLF15	HY-KLF16	HY-KLF17	HY-KLF18	HY-KLF19	HY-KLF20	HY-KLF21	HY-KLF22
HY-GS01	HY-GS02	HY-GS03	HY-GS04	HY-GS05	HY-GS06	HY-GS07	HY-GS08	HY-GS09	HY-GS10
HY-GS11	HY-GS12	HY-GS13	HY-GS14	HY-GS15	HY-GS16	HY-GS17	HY-GS18	HY-GS19	HY-GS20
HY-GS21	HY-GS22	HY-NHN01	HY-NHN02	HY-NHN03	HY-NHN04	HY-NHN05	HY-NHN06	HY-NHN07	HY-NHN08
HY-NHN09	HY-NHN10	HY-NHN11	HY-NHN12	HY-NHN13	HY-NHN14	HY-NHN15	HY-NHN16	HY-NHN17	HY-NHN18
HY-NHN19	HY-NHN20	HY-NHN21	HY-NHN22	HY-SYS01	HY-SYS02	HY-YS01	HY-YS02	HY-YS03	HY-YS04